

APPLY FOR PHD ADMISSION



Centre for Applied Research in Electronics (CARE) , IIT Delhi

Elevate & Transform yourself through Excellence in Advanced Electronics Research!

Microelectronics

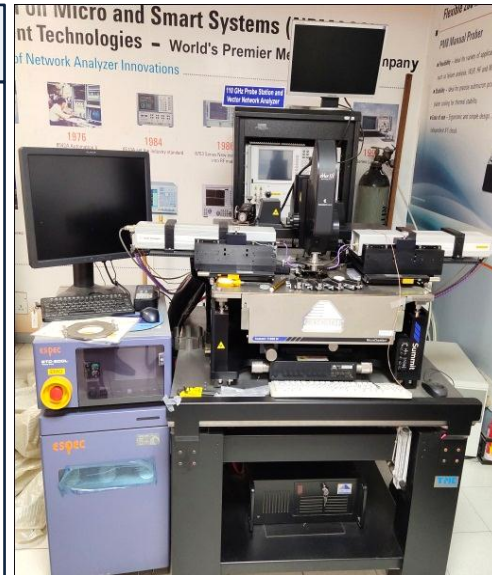
- ❖ Micro-Electro-Mechanical System(MEMS) Technology
- ❖ Nanoelectronic and Optoelectronic Devices
- ❖ THz Electronics: Detector and Modulator
- ❖ Semiconductor Power Devices
- ❖ Quantum Electronic Devices
- ❖ CMOS Circuit Design

Microwaves and RF

- ❖ Active and Reconfigurable Circuits and Antennas
- ❖ Millimeter Wave and THz Circuits and Sub-Systems
- ❖ Microwave Imaging
- ❖ RF MEMS
- ❖ Wideband Microwave Circuits
- ❖ Modeling of Active Devices

Signal Processing

- ❖ DSP Algorithms and Applications
- ❖ Underwater Acoustics
- ❖ Speech and Audio
- ❖ General Acoustics
- ❖ Machine Learning Methods in Signal Processing
- ❖ Acoustic Imaging
- ❖ Multi Sensor Data Fusion
- ❖ Digital Communications



110GHz Probe Station

Why PhD at CARE , IIT Delhi

- ❖ Publications in Best International Journals in Respective Fields
- ❖ World Class Laboratory Facilities and Latest Hardware for Advanced Experiments
- ❖ Emphasis on Industry Oriented and Practical Applied Research Work
- ❖ IIT Delhi is highly ranked Internationally in Electrical and Electronics Field

Recent Achievements of CARE , IIT Delhi

- ❖ Several Books written by Faculty Members
- ❖ International Patents Obtained / Applied
- ❖ Various International and National awards won by Faculty and Students (IEEE Life Fellow , INAE Award , IEEE Best Paper Award , ...)
- ❖ Rs 33.7 Crores Sponsored Research Funding (In Last 2 Years)

Key Benefits Offered to PhD Students

- ❖ Several Assistantship from Institute ,Projects and Industry Available (Rs 31K-35K + Top up)
- ❖ Travel Grants : Rs 1.5Lacs(RSTA) + Rs 1.5Lacs(RET) for attending International Conferences
- ❖ State of the art Advanced Research Facilities

Placement Opportunities

- ❖ Academic Positions in top Institutes (IITs , NITs)
- ❖ R&D Position in Worldwide Reputed Industries (Intel , Qualcomm, Texas Instruments , ...)
- ❖ Postdoc Opportunities in Best Universities across the Globe (Imperial College UK, National Chiao Tung University Taiwan , ...)



Under Water Tank

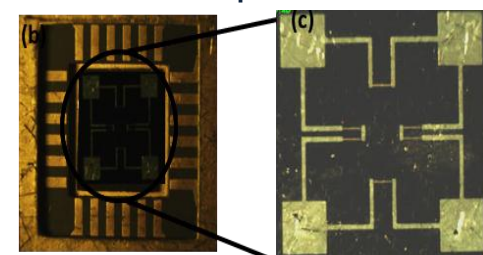
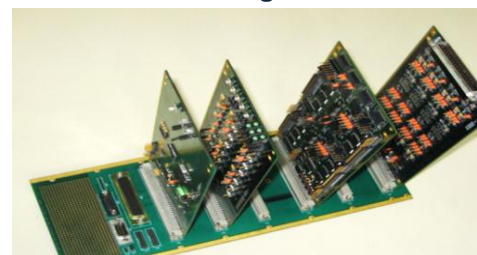
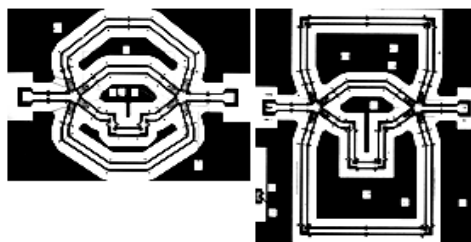
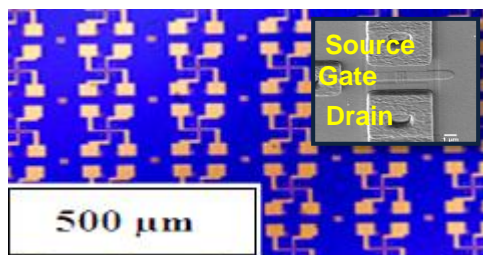
Products Developed by CARE , IIT Delhi

Junction less Phototransistor

RF MEMS based 2-bit phase shifter using SP4T switch

Low Power DSP Acoustic Signal Processing Module

Pressure sensor AI induced amorphous-Si



Contact Details : Visit : <http://care.iitd.ac.in>
 CARE Office
 Room No.- 218, Block III
 Indian Institute of Technology Delhi
 New Delhi-110016, India Phone: +91 11 2659 1101

Links for PhD Applications:

Indian Students :

International Students :

<https://ecampus.iitd.ac.in/PGADM/login> <http://asean.iitd.ac.in> <http://intladm.iitd.ac.in>

Application Deadline :
 In March and October
 for 1st & 2nd Semester
 Admissions respectively
 (Check IITD website for Details)